

MIG WELDING TORCHES

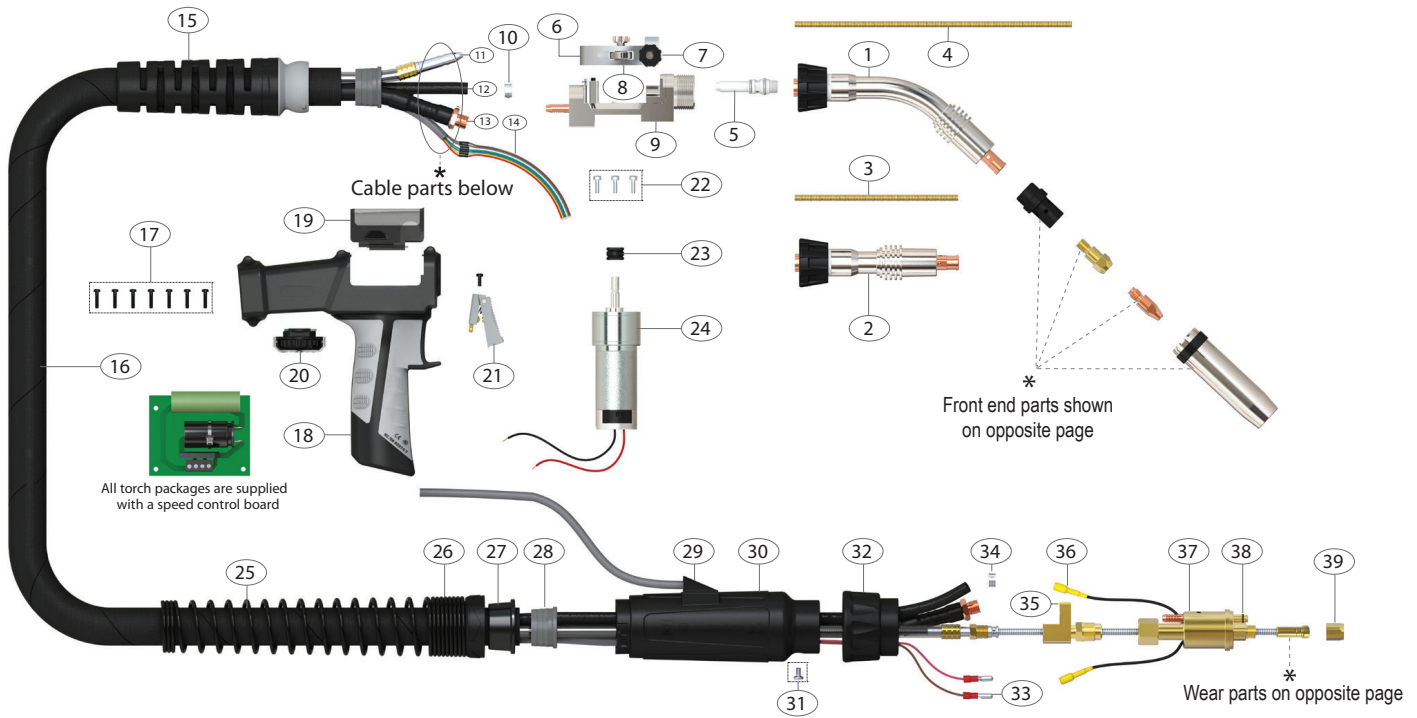
XAP360 PUSH-PULL TORCH



300A AIR COOLED MIG WELDING TORCH

Rating:300A CO₂ 270A mixed gas EN60974-7 @ 60% duty cycle. 0.8 to 1.2mm wires

Suregrip™ Series



Torch Model	Part Number
XAP360 Suregrip™ 42v Push Pull Mig Torch Package 45° Neck x 8m	XAP3600-42-A45-80ER
XAP360 Suregrip™ 42v Push Pull Mig Torch Package Straight Neck x 8m	XAP3600-42-A180-80ER
XAP360 Suregrip™ 24v Push Pull Mig Torch Package 45° Neck x 8m	XAP3600-24-A45-80ER
XAP360 Suregrip™ 24v Push Pull Mig Torch Package Straight Neck x 8m	XAP3600-24-A180-80ER

Spare Parts		
Part Number	Description	
1	XAP3603	Swan Neck Assembly 45°
2	XAP3603A	Straight Neck Assembly
3	XAP3602	Jump Liner
4	XAP3602A	Jump Liner
5	XAP36006	Jump Liner Nipple
6	XAP36402	Pressure Arm Assembly
7	XAP36402B	Tension Knob
8	XAP36402R	Pressure Roll
9	XAP36001	Motor Body
10	XA5041	Water Hose Clamp 8.7mm
15	XA3208	Handle Cable Support
16	XAP36419-80	Canvas Cover Assembly
17	XASP1	Handle Screw
18	XAP2514/KJ	Push Pull Handle
19	XAP2514/C	Push Pull Handle Cover
20	XAP0807-1	Potentiometer Kit 1K
	XAP0807-5	Potentiometer Kit 5K
	XAP0807-10	Potentiometer Kit 10K
	XAP0807-25	Potentiometer Kit 25K
21	XAP2516	Trigger
22	XAPMS1	Motor Screw
23	XAP8224W-08	Drive Roll For Wire 0.8
	XAP8224W-09	Drive Roll For Wire 0.9
	XAP8224W-10	Drive Roll For Wire 1.0
	XAP8224W-12	Drive Roll For Wire 1.2

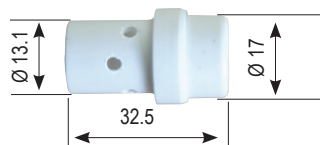
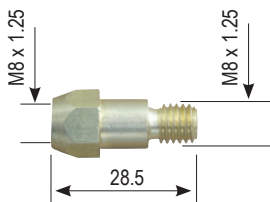
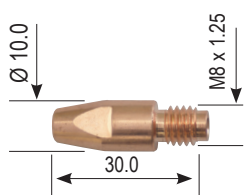
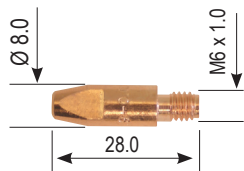
Spare Parts		
Part Number	Description	
23	XAP8224W-09U	Drive Roll U Groove 0.9mm
	XAP8224W-10U	Drive Roll U Groove 1.0mm
	XAP8224W-12U	Drive Roll U Groove 1.2mm
24	XAP8224-24	Motor 24V DC
	XAP8224-42	Motor 42V DC
25	XA8027	Housing Spring
26	XA8028	Spring Cable Support Nut
27	XA8009	Canvas Cover Clamp
28	XA8010	Canvas Cover Retainer
29	XALH26-C	Housing Insert
30	XA5022	Gun Plug Housing Assembly
31	XA1526	Gun Plug Screw
32	XA1519/S	Gun Plug Nut
33	XA1522	Cable Terminal Male
34	XA5024	Water Hose Clamp 9.5MM
35	XAP3608C	Power Fitting
36	XA1523	Gun Plug Terminal Female
37	XAP1528	A/C Gun Plug Body Assembly
38	XA1524	Gun Plug 'O' Ring
39	XA1525	Liner Nut

Cable Parts		
Part Number	Description	
11	XAP36408-80	Outer Liner Assembly
12	XAP36413-80	Gas Hose Assembly
13	XAP36015-80	Power Cable Assembly
14	XAP36410-80	Switch Lead Assembly

XAP360 MIG TORCH CONSUMABLES

Suregrip™ Series

Front end consumables



XA36 Contact Tips M6

Part Number	Description
XA2504-06	Contact Tip ECu 0.6mm D6 M6 x 28mm
XA2504-08	Contact Tip ECu 0.8mm D8 M6 x 28mm
XA2504-09	Contact Tip ECu 0.9mm D8 M6 x 28mm
XA2504-10	Contact Tip ECu 1.0mm D8 M6 x 28mm
XA2504-12	Contact Tip ECu 1.2mm D8 M6 x 28mm
XA2504-16	Contact Tip ECu 1.6mm D8 M6 x 28mm
XA2504-10A	Contact Tip ECu 1.0Amm D8 M6 x 28mm (for Aluminium)
XA2504-12A	Contact Tip ECu 1.2Amm D8 M6 x 28mm (for Aluminium)
XA2504-16A	Contact Tip ECu 1.6Amm D8 M6 x 28mm (for Aluminium)

XA36 Contact Tips M8

Part Number	Description
XA4014-08	Contact Tip ECu 0.8mm D10 M8 x 30mm
XA4014-09	Contact Tip ECu 0.9mm D10 M8 x 30mm
XA4014-10	Contact Tip ECu 1.0mm D10 M8 x 30mm
XA4014-12	Contact Tip ECu 1.2mm D10 M8 x 30mm
XA4014-16	Contact Tip ECu 1.6mm D10 M8 x 30mm
XA4014-20	Contact Tip ECu 2.0mm D10 M8 x 30mm
XA4014-10A	Contact Tip ECu 1.0Amm D10 M8 x 30mm (for Aluminium)
XA4014-12A	Contact Tip ECu 1.2Amm D10 M8 x 30mm (for Aluminium)
XA4014-16A	Contact Tip ECu 1.6Amm D10 M8 x 30mm (for Aluminium)

XA36 Tip Holder

Part Number	Description	Tip Thread	Material
XA3612	XA36 Tip Holder L = 28.5mm	M6	Brass
XA3614	XA36 Tip Holder L = 28.5mm	M8	Brass

Gas Diffuser XA36

Part Number	Description	Colour	Material
XA3605W	XA36 Gas Diffuser L = 32.5mm	White	DMC3
XA3605C	XA36 Gas Diffuser L = 32.5mm	White	Ceramic
XA3605B	XA36 Gas Diffuser L = 32.5mm	Black	DCM3
XA3605H	XA36 Gas Diffuser High Temp	Black	HPP

XA36 Gas Nozzle

Part Number	Description	Type	Bore Ø	Material
XA3615	XA36 Gas Nozzle	Cylindrical	19.0mm	Copper
XA3616	XA36 Gas Nozzle	Conical	16.0mm	Copper
XA3617	XA36 Gas Nozzle	Tapered	12.0mm	Copper

XAP360 Liners

Part Number	Description
XA5033-80B	Steel Liner 0.8-1.2mm wire x 8.5m Brass Nipple
XA5034-80B	Steel Liner 1.2-1.6mm wire x 8.5m Brass Nipple
XA2513-80	Teflon Liner 0.8-1.2mm wire x 8.6m Brass Nipple
XA3564-80	PA Liner 1.0-1.6mm wire x 8.5m Brass Nipple

Liners

